



# MONTHLY MEMBERSHIP PROGRESS REPORT

District 13 OH3

Results as of: 05/31/2019

GMT: CINDY GREGG

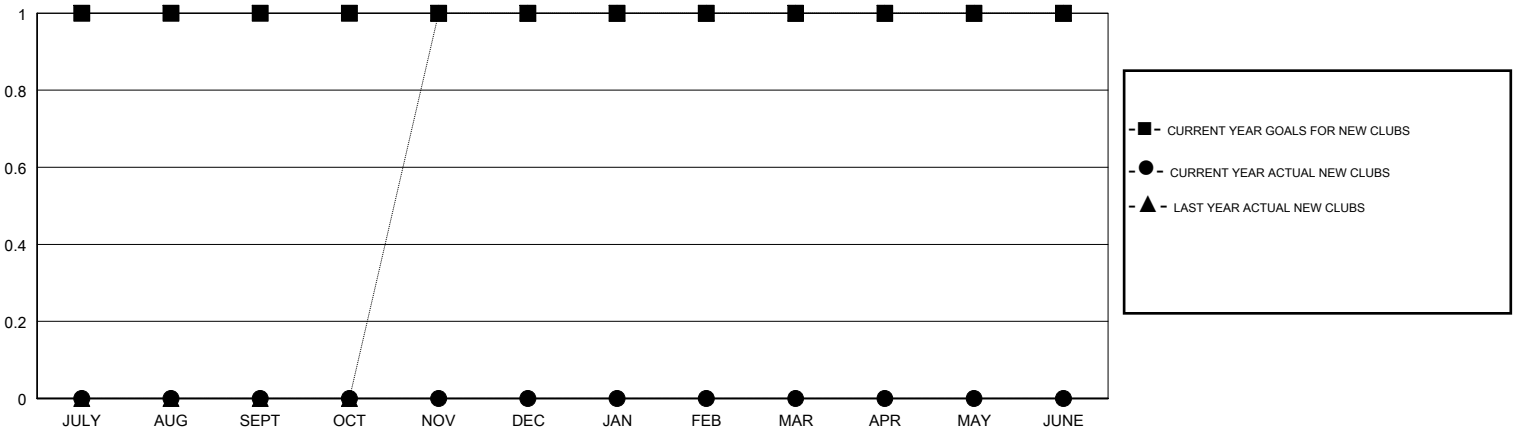
LOCATION OHIO

GMT CA

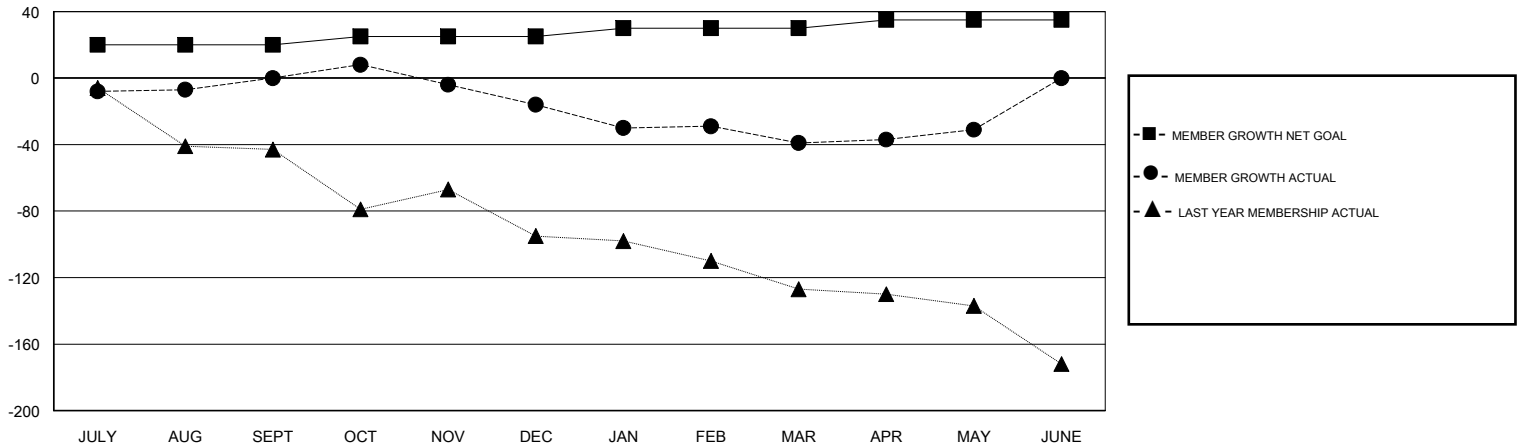
Clubs			
RESULTS FOR 2018-2019			
QUARTER	NEW CLUB GOAL	NEW CLUBS	DROPPED CLUBS
JULY/AUG/SEPT	1	0	0
OCT/NOV/DEC	0	0	0
JAN/FEB/MAR	0	0	0
APR/MAY/JUNE	0	0	0

Members			
RESULTS FOR 2018-2019			
QUARTER	MEMBER GROWTH NET GOAL	MEMBER GROWTH ACTUAL	DROPPED MEMBERS ACTUAL (including transfers)
JULY/AUG/SEPT	20	30	26
OCT/NOV/DEC	5	26	42
JAN/FEB/MAR	5	35	52
APR/MAY/JUNE	5	20	12

GOALS AND ACTUAL NEW CLUBS CUMULATIVE



GOALS AND ACTUAL MEMBERS CUMULATIVE



DROPPED CLUBS: 0
------------------

33 CLUBS OF 56 ADDED 1 OR MORE NEW MEMBERS

GENDER DISTRIBUTION	
MALE	1,037 (69.09%)
FEMALE	464 (30.91%)
Women Percentage Fiscal Year Goal: 40%	

DROPPED MEMBERS	
DECEASED	25
CLUB CANCELLED	0
OTHER	107
<b>TOTAL</b>	<b>132</b>

[CLICK HERE FOR CUMULATIVE MEMBERSHIP DATA](#)

TOTAL FAMILY UNIT MEMBERS	281
FAMILY MEMBERS PAYING HALF DUES	146